

The background features a large, abstract geometric shape composed of various shades of green triangles and polygons, extending from the top-left corner towards the bottom-left. The rest of the page is white.

**QCommission**

Pay People Properly

[www.qcommission.com](http://www.qcommission.com)

QCommission enables you to quickly calculate commission, draw and bonuses, verify results and distribute this information to your account executives, recruiters, consultants and managers. Present the commission information in such a way that your staff clearly understands what they are being paid and why they are being paid at a very detailed level. Excel and manual calculations can introduce a lot of errors into your calculations and cause your staff to lose trust in you. QCommission can help avoid that by calculating all commissions systematically and reliably.

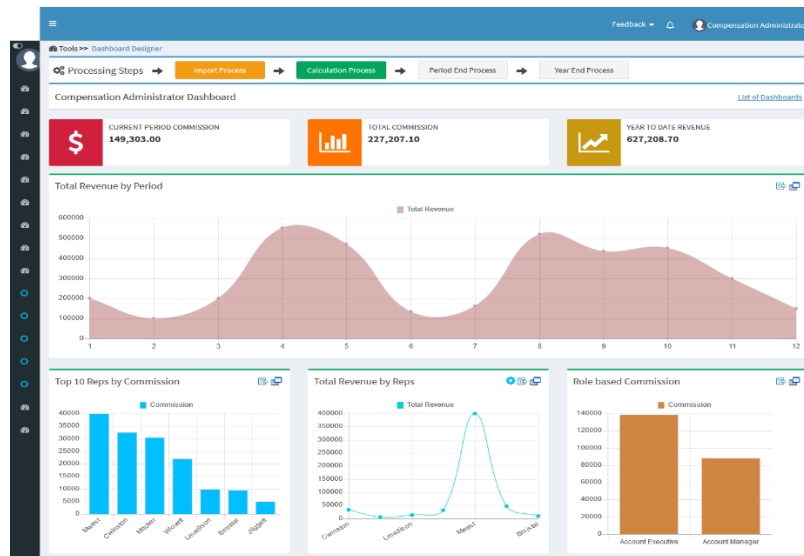
### **Calculate Accurately with Flexible Rules**

QCommission provides a lot of flexibility to set up commission plans that are unique to your company and your payees.

- Pay commission by various types of services such as legal, audit, etc.
- Calculate commissions-based sales revenue or profit.
- Pay commissions at time of invoicing, at time of payment or when job is complete.
- Pay commissions on one-time payments or on multiple payments for a payment plan.
- Pay different commission rates for different services
- Pay different commission rates by payment plan
- Pay different commission rates for sales reps
- Split commission rates between sales reps
- Pay overrides to managers and principals
- Deduct service fees prior to calculating commissions
- Pay referral commissions
- Pay commissions as a portion of results, flat amounts, tier rate with thresholds, etc.
- Calculate incentives weekly, bi-weekly, monthly and other Chargeback commissions for cancelled contracts.
- Handle negative payouts.
- Pay draws or guaranteed payouts.

# QCommission

Pay People Properly



QCommission is designed to integrate with Salesforce.com, Sage Peachtree, Sage Intacct, MS Dynamics GP, MS Dynamics Axapta, QuickBooks, SugarCRM, Xero, NetSuite and many others. QCommission can also accept Excel, fixed file and delimited format files. QCommission can process some PDF format files too.

QCommission can also operate stand-alone.

- Import data from accounting system including Invoices, Expenses, Payees, Customers and Products.
- Import from Excel, PDF and fixed or text-delimited files
- Restrict Transaction import using a date range.
- Export Commissions payouts for accounts payable and payroll
- Export data to Excel, and fixed or text-delimited file formats.
- Eliminate shipping, tax charges from calculations.

## Reporting

QCommission stores all data entered and all payout calculations.

- Produce detailed commission statements by payee.
- Reproduce commission statements for prior periods.
- Report on split credits and uncredited transactions
- Analyze historical transaction and payment information
- Email commission statements to payees.
- View commission statements through the web.

# QCommission

Pay People Properly

### **Global Safety Network Ensures They Pay People Properly with the Help of QCommission**

Global Safety Network is a “national provider of risk management solutions.” Their company provides employers with work place solutions to promote ease of hiring, employee retention, compliance and confidence. Global Safety Network’s commitment to customer satisfaction makes them one of the leading providers of employment screening services in the country.

Aside from the wide array of management solutions they provide, Global Safety Network also has hundreds of discounted products that one can purchase to further ensure a safe and drug-free workplace.

Global Safety Network has different commission plans for multiple payees. They pay commissions for their internal sales reps, independent sales reps, and alliance partners. For them, paying commissions is also based on different products, calculating different commission rates based on date.

Manually doing all of the above took a lot of time and effort, not to mention the entire process was prone to errors – which could cost a lot of money if not corrected promptly. After Global Safety Network submitted a Demo Inquiry for QCommission, the QCommission team met with Karyn Skyberg, a Senior Analyst at the company, and discussed everything that needed to be considered in the development of a custom solution. The QCommission team exerted all their effort to ensure that the sales compensation plans and the entire customization were setup properly and to Global Safety Network’s satisfaction.

Since Global Safety Network switched to QCommission, the countless hours of manual sales commission computations have been drastically reduced to an average of 8 hours per month.

With Global Safety Network’s inevitable growth in the near future, they are expecting an increased number of payees and are looking forward to continuously working with QCommission to help them manage their sales commissions calculations for them.

Global Safety Network has been with QCommission for over a year.

# QCommission

Pay People Properly

# Reporting

### Quote

"Our company is faced with a number of different commission plans for multiple payees. We faced some challenges that, we have to admit, had us slightly concerned. A discussion with our QCommission Representative had everyone stepping up to identify problems to help us resolve our issues quickly and to our complete satisfaction. We could easily see how important 100% customer satisfaction is for everyone on the QCommission team. They are very knowledgeable and helpful, and we appreciate every effort they put in for us to make our transition to QCommission a success. A special thank you to Vijay, Siva, Chandru, and everyone else on the QCommission team. We appreciate all of your help and look forward to working with you in the future as our business continues to grow."

- Karyn Skyberg, Senior Analyst, Global Safety Network

Victory Distribution and Services, Inc. - Sales Commission Statement

Page 1 of 2 | Go | PDF | Export Details

**QCommission**

Payee ID : Rajgopal  
 Payee Name : Siva Lijgopal  
 Territory ID : TER201  
 Currency :

Plan ID : PL01  
 Period : 1 (6/1/2017 - 6/30/2017)  
 Position : Sales Representative  
 Fiscal Year : 2017

Gross Pay Amt : 4,000.00  
 Draw/Adv Adjustment : 0.00  
 Cap Adjustment : 0.00  
 Minimum Pys Adjustment : 0.00  
 Other Adjustment : 0.00  
 Adjustment To Paymt : 0.00  
 Recovery From Paymt : 0.00  
 Net Paymt Amt : 4,000.00

Txn	Date	Type	Group	Customer	Product ID	Sales Amount	Cum. Rate	Credit Amount	Commission Rate	Paid Amount
<b>Comments</b>										
Incentive ID : Monthly All Product Revenue Commission										
FF01-1	3/1/2017	Invoice		Towers Construction	PPR	10,000.00	10,000.00	10,000.00	10.00	1,000.00
FF02-1	3/15/2017	Invoice		Acme Maintenance	EIR Repairs	10,000.00	10,000.00	10,000.00	10.00	1,000.00
CC01-1	6/1/2017	Invoice		Sentinal Properties	Building estimates	10,000.00	10,000.00	10,000.00	10.00	1,000.00
CC02-1	6/15/2017	Invoice		Majken Remodeling	Building estimates	10,000.00	10,000.00	10,000.00	10.00	1,000.00
						<b>Total</b>		40,000.00		4,000.00

**Payment Adjustments**

Reference ID	Effective Date	Adjustment Type	Action	Adjustment Amount	Comments
Inv001	6/30/2017	Payment	Add	900.00	Prior period unpaid deal

Victory Distribution and Services, Inc. - Sales Commission Statement

Page 1 of 2 | Go | PDF | Export Details

**QCommission**

Payee ID : Binital  
 Payee Name : Babu Binital  
 Territory ID : TER202  
 Currency :

Plan ID : PL02  
 Period : 2 (6/1/2017 - 6/30/2017)  
 Position : Sales Representative  
 Fiscal Year : 2017

Gross Paymt Amt : 30,200.00  
 Draw/Adv Adjustment : 0.00  
 Cap Adjustment : -27,100.00  
 Minimum Pys Adjustment : 0.00  
 Other Adjustment : -100.00  
 Adjustment To Paymt : 0.00  
 Recovery From Paymt : 0.00  
 Net Paymt Amt : 3,000.00

Txn	Date	Type	Group	Customer	Product ID	Sales Amount	Cum. Rate	Credit Amount	Commission Rate	Paid Amount
<b>Comments</b>										
Incentive ID : Monthly All Product Revenue Commission										
FF02-1	3/15/2017	Invoice		Acme Maintenance	EIR Repairs	10,000.00	10,000.00	10,000.00	10.00	1,000.00
FF03-1	3/15/2017	Invoice		Sentinal Properties	Facet	100,000.00	100,000.00	100,000.00	6.00	6,000.00
FF06-1	3/15/2017	Invoice		Sentinal Properties	Facet	100,000.00	100,000.00	100,000.00	6.00	6,000.00
CC01-1	6/1/2017	Invoice		Sentinal Properties	Building estimates	10,000.00	10,000.00	10,000.00	6.00	600.00
CC03-1	6/15/2017	Invoice		Sentinal Properties	Slak	10,000.00	10,000.00	10,000.00	6.00	600.00
CC08-1	6/15/2017	Invoice		Sentinal Properties	Facet	100,000.00	100,000.00	100,000.00	6.00	6,000.00
DD01-1	6/30/2017	Invoice		Acme Maintenance		100,000.00	100,000.00	100,000.00	10.00	10,000.00
						<b>Total</b>		410,000.00		30,200.00



Pay People Properly

Page 1 of 4

**Victory Distribution and Services, Inc.**  
**Payee Ranking by Attainment**

**QCommission**

Performance Category : Fiscal Year : 2017  
Period : 3

Payee ID	Payee Name	Goal Amt	Attainment	Ranking	Job Category	Territory ID	Currency
Payee Job Category : Sales Representative							
Bmistal	Barb Mistal		430,000	1	Sales Representative	TERR02	
Liggett	John Liggett		40,000	2	Sales Representative	TERR01	

Page 1 of 35

**Victory Distribution and Services, Inc.**  
**Payment by Transaction ID**

**QCommission**

Transaction ID : AA01 Fiscal Year : 2017  
 Customer ID : Towers Construction  
 Transaction Type : Invoice

Txn Eff Date	Period	Txn Line	Txn Line Type	Product ID	Sales Amt	Qty	Credit Amt	Attainment	Attain Percent	Payout Period	Commission Rate	Goal Amt	Payee ID	Incentive ID	Payout Amt	Currency
4/1/2017	3	1	Standard	pipe	10,000		1,060,000	1,060,000	106	3		1,000,000	Cwinston	Quarterly All Product Revenue Bonus	5,000	
4/1/2017	1	1	Standard	pipe	10,000		10,000	10,000	3.33	1	1	300,000	Cwinston	Monthly Regional All Product Revenue Commission	100	
4/1/2017	1	1	Standard	pipe	10,000		10,000	10,000	0	1	10		Liggett	Monthly All Product Revenue Commission	1,000	
<b>Total :</b>							1,080,000	1,080,000							6,100	